

Clinical Connections

Volume 1 Issue 3 May 2006

Editor: Molly Carlile

The Regional Plan: What does it mean to you?

The regional plan was developed after consultation with all member organisations of the consortium, generalist service providers, acute services, client and carer groups. The aim of the regional plan is to ensure that all people in our region have access to and are provided with palliative care services that meet their needs, both now and in the future.

Of course during the process of developing the plan there were a number of 'gaps' identified, issues raised and concerns voiced about how we best achieve this.

The priority areas included in the plan are:

- Strengthening the resource capacity of Palliative care services
- Providing a range of Palliative care services
- Enhancing Communication, collaboration and Coordination
- Education and training
- Strengthening relationships with generalist service providers
- Improving services for Culturally and Linguistically Diverse communities
- Improving services for the indigenous community
- Research
- Establish linkages with Metropolitan Integrated cancer services

So our plan is an extensive one, hence all of the ongoing activity within the region. If you would like to look at the Regional Plan in more detail, each member organisation has a copy.

Next issue: The regional priorities in detail.

A word from the **Clinical Committee**

Those of you who read the last edition of Clinical Connections will by now know who your representative on the Clinical Committee is! I hope you've made contact with your representative and continue to make them aware of clinical issues you want highlighted now and in the future.

At present the committee is working on a number of initiatives, including the development of a standardised Clinical Referral Tool to sit alongside the SCTT templates. Why do we need another tool? At present every service within the region has a specific referral form but none of these forms are standardized. This means that generalist providers, particularly GP's, community health services and local government providers have to different forms every time they refer a client to one of our services. By developing a standardized form, we will be

able to expect referrals that provide us with the information we need in order to process an admission. A standardized referral will mean that every service will receive the same information about the client, that the information is up to date and that it is the information we actually need.

Of course coming up with a single form is no easy task and the Clinical Referral Working Group are currently formalizing the 4th draft of the form. Once complete, the new form will be trialed alongside the SCTT templates and then refined and formatted.

Issues of medication and oxygen access are being explored by another of the Clinical Committee working groups. Cost of particular medications, difficulty accessing them (particularly in the community) and out of hours supply are only some of the problems clients

This is your Newsletter

Please be involved!

Contact Molly Carlile: mollyinv@bigpond.net.au with your comments, articles and questions. Title your email CLINICAL CONNECTIONS.

May 22nd –28th is

National Palliative Care Awareness Week.

and clinicians face regarding medication. Members of the working group are keen to hear about any difficulties you have had accessing oxygen or medication for your clients, so please contact your clinical representative and tell them about your experiences.

Information about the Self Care and Supervision Working Group will be in the next edition.

Who is doing what??

There are a number of activities being conducted across the region to celebrate National Palliative Care Awareness Week. What is your organization doing?

“Residential Palliative Care– The New Frontier” a joint seminar conducted by North and West Region Palliative Care Consortium and

Melbourne Division of General Practice. Guest speaker: Prof. Michael Ashby. Panel discussion and dinner provided. May 24th. 6.30 pm. (contact M.Carlile for more information)

Launch of PCV Website May 22nd 11am, (contact PCV 9662 9644)

2006 Major Fundraising Auction Night. Banksia (More information from Hannah 94972100) Palliative Care. June 22nd.

Maribyrnong River.



Photo by Carla Dobel

Clinical Connections

Volume 1 Issue 3 May 2006

Editor: Molly Carlile

Consortium Information Brochure

The consortium has developed a regional information brochure as an awareness raising tool for use in the generalist community.

The brochure provides information on the North and West region and member organizations. It explores the philosophy of palliative care, the holistic model and interdisciplinary care.

It gives an overview of the regional plan and regional priorities as defined in the plan and gives a summary of the DHS policy document on which the plan was based.

The brochure was developed for use in local government, GP practices, community health centres, private providers, aged and residential care facilities to inform them of the work of the consortium in the region.

Brochures are available for placement in your organization. If you require copies, please advise via your clinical representative or consortium staff representative.

SUBMIT A PHOTO OR PUZZLE.

Do you have a photo from an activity conducted in your organisation?

Do you want to promote an upcoming education session?

Do you have a symptom management issue you want explored?

Please send to Clinical Connections for inclusion in the next edition.



Win **FREE** registration!

Palliative Care Victoria's 5th Biennial State Conference is on in Bendigo on Thursday 13th and Friday 14th of July.

The theme "Palliative Care A Community Affair" will be explored via key note addresses from Prof. Allan Kellehear, Ms Sue Salau and Ms Debra O'Connor. Workshops will be conducted across the two days covering a range of topics from end of life decision making and public health to working with volunteers and general practitioners.

Over the two days there will be a variety of formats including workshops and small presentation groups that will enable participants to ask questions and be involved in discussions with their peers.

The theme recognizes the growing importance of community approaches in palliative care. Public health practices in health promotion, prevention, harm reduction, community development, education and partnerships are now a part of

Victoria palliative care policy. The conference celebrates some of these achievements and innovations whilst examining the challenges that lie ahead in continuing this important work.

You can win free registration to the conference (worth \$150) by simply doing the following.

Write a 500 word article and submit to Clinical Connections by June 20th on a contemporary *clinical* issue in palliative care. It may be a symptom management strategy OR a personal reflection on your experiences working in palliative care.

Practitioners who are new to palliative care or have been working in the field for a long time are encouraged to enter. The winning entry will be published in the July edition.

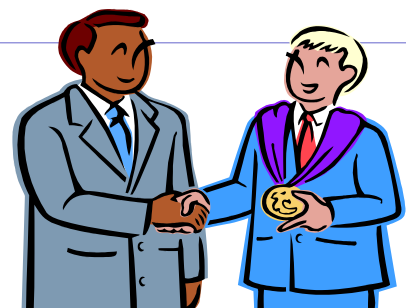
Brochures can be accessed via the PCV website: www.pallcarevic.asn.au

Recognising Excellence

International Nurses Day is celebrated world wide, each year on Florence Nightingale's birthday on May 12th. International Nurses day is an opportunity to celebrate the profession and to recognize the achievements of nurses in all spheres of practice.

Austin Health conducted a celebration and two awards were presented. Bernadette Vandenberg, NUM, Palliative Care Unit was presented with The Clinical Leadership Award for "displaying leadership in a complex environment and for her proactive responses to ensuring safe patient care".

Those of you who have worked with



Bernadette will know what a very worthy recipient of this award she is and it's wonderful that her contribution to both palliative care and the profession has been recognized.

Congratulations Bernadette!